

# Standard

## COLOR SELECTION GUIDE

| DEXTER PAINT    | TRIM   | 26 GA. | 24 GA. |
|-----------------|--------|--------|--------|
| LIGHT BLUE      |        | •      |        |
| MISTY GRAY      |        | •      |        |
| SUNSET RED      | • STD. | •      |        |
| COLONY GREEN    |        | •      |        |
| AUTUMN GOLD     |        | •      |        |
| SPANISH GOLD    |        | •      |        |
| CINNAMON BROWN  |        | •      |        |
| STONE BEIGE     | • STD. | •      |        |
| WHITE           | • STD. | •      | •      |
| ROYAL RED       | • STD. | •      |        |
| BURNISHED SLATE | • STD. | •      |        |
| ROMAN BLUE      | • STD. | •      |        |
| DARK GREEN      | • STD. | •      |        |
| ICE GRAY        | • STD. | •      |        |
| GALVANIZED      | • STD. | •      |        |
| GALVALUME       | • STD. | •      | •      |

Final colors of coated metal may vary slightly from samples shown. The colors shown are based on information available at the time of publication. Manufacturer reserves the right, at its option, without liability, to change, add or delete colors.



MISTY GRAY



SUNSET RED



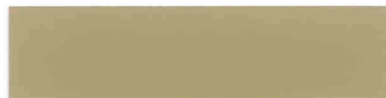
DARK GREEN



COLONY GREEN



AUTUMN GOLD



SPANISH GOLD



CINNAMON BROWN



STONE BEIGE



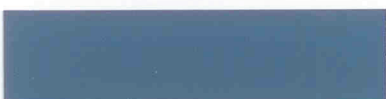
WHITE



ROYAL RED



BURNISHED SLATE



ROMAN BLUE



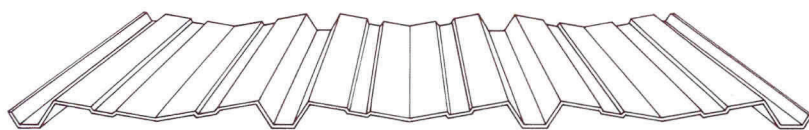
LIGHT BLUE



ICE GRAY

## PANEL CONFIGURATIONS

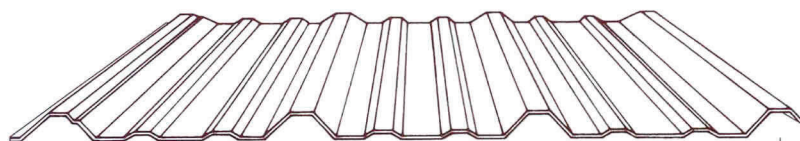
### ARCHITECTURAL PANEL



36" COVERAGE

### HI-RIB STANDARD

WITH PURLIN BEARING LEG



36" COVERAGE

SOME COLOR TRIM AVAILABLE AT ADDITIONAL COST. CONTACT YOUR ACCOUNT REPRESENTATIVE.